



JEMKON

ISO 9001:2015

JEMKON PVT LTD

Shaping the future of construction chemicals

Waterproofing | Tile Adhesive | Tile Grouts | Self Leveling | Expansion Joints
Car Park Flooring | Repair Mortars | Heat Reflective Coatings

www.jemkon.com



JEMKON

It is a dream for everyone to own a house / factory of their own, even better when one can witness the foundation being laid and see it take shape in front of them. But there is a common problem for all - water seepage due to bad waterproofing. It hollows the whole structure of building, causes long term problems affecting the life of overall construction.

JEMKON is one stop solution for all sort of construction chemicals

OUR VISION & MISSION

OUR VISION

We aspire to be industry leader in **CONSTRUCTION CHEMICALS** and **EPOXY FLOORING** solution enhancing durability sustainability & safety of every construction we touch and committed to pioneering cutting technologies that refines construction standards.

OUR MISSION

To strive to be a trusted partner for our clients offering innovative, sustainable and eco-friendly **CONSTRUCTION CHEMICALS** and **EPOXY FLOORING** options that meets their unique needs.





TABLE OF CONTENT

PRIMERS

JEMBOND EP 63	1
JEMBOND ACP 16	1
JEMBOND ACP 01	2

LEVELLING COMPOUNDS

JEMFLOW 15	2
------------	---

CEMENTITIOUS WATERPROOFING

JEMSHIELD CT SMART	3
JEMSHIELD CT SUPER	3
JEMSHIELD CT FLEX	4
JEMSHIELD CT 25 (OSMOTIC COATING)	4

ADHESIVE

JEMSIVE CT 20	5
JEMSIVE CT 30	5
JEMPROOF L 35	6
JEMSIVE CT 40	6
JEMSIVE CT 50	7
JEMSIVE CT 60	7
JEMSIVE EP 100	8

POLYUREA

JEMSTRETCH PLA 400	9
--------------------	---

HEAT REFLECTIVE COATING

JEMKOOL 666	10
JEMKOOL 555	10

SCREEDS

JEMPROOF SBR 36	11
JEMPROOF SRL 16	12
JEMBOND EPP 900	13
JEMBOND EPP 22	13

CONCRETE REPAIR

JEMGROUT GP	14
-------------	----

EXPANSION JOINTS

JEMBAND TAPE	14
--------------	----

DUCT TAPE

JEMSHIELD TAPE	15
----------------	----

BASEMENT WATERPROOFING

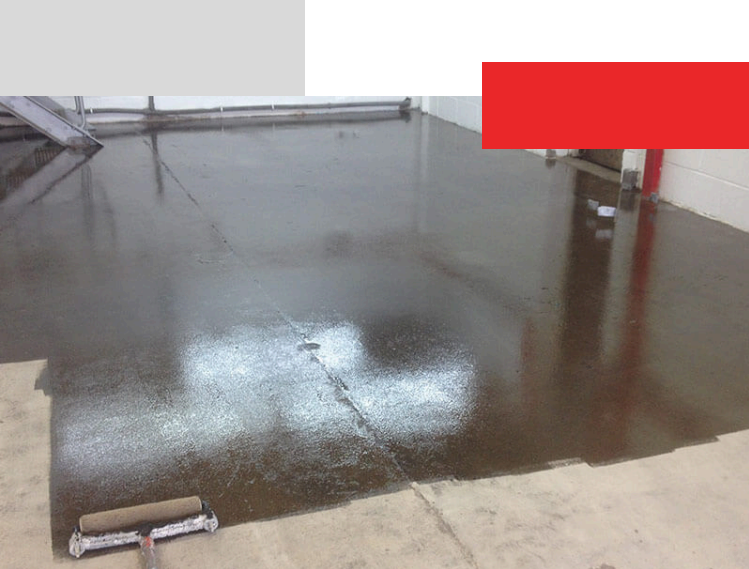
JEMSHIELD HDPE 1.5 W	15
----------------------	----

SWELLABLE WATER BAR

JEMSWELL 90	16
-------------	----

OTHERS

JEMTEX PPF 01	17
JEMSHIELD RSP	17



JEMBOND EP 63

Description

JEMBOND EP 63 is a two-component, fillerized epoxy resin-based primer in compliance with the Radon gas tightness standards.

Where to use

- Adhesion promoter for epoxy and polyurethane coating products in general.
- Adhesion promoter for self-leveling and/or multi-layered coating products.
- Adhesion promoter for flooring made from synthetic mortar.
- Fluid adhesive to seal cracks and make structural bonds.

Technical Data

Mixing Ratio:		Component A : Component B = 80 : 20
Pot Life:		30 mins.
Compressive Strength (N/mm ²):		63 (7 days at +23°C)
Packaging:		5 kg kits: component A = 4 kg; component B = 1 kg. 20 kg kits: component A = 16 kg; component B = 4 kg.

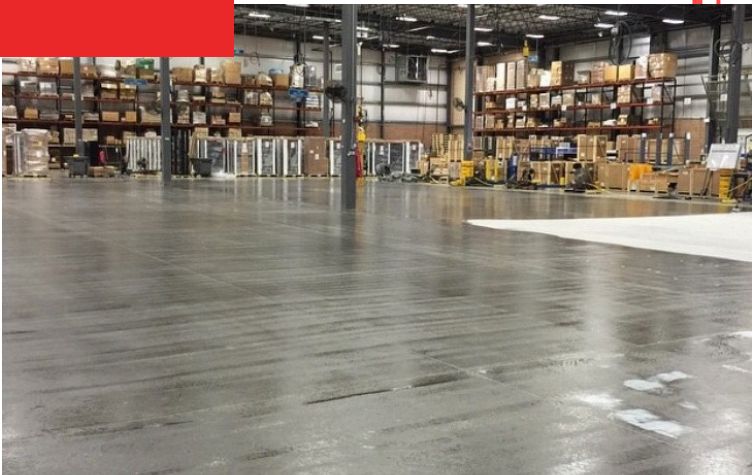
JEMBOND ACP 16

Description

JEMBOND ACP 16 is a single component acrylic based polymer when blended with cement, forms a composite polymer modified cementitious waterproofing system, when used in conjunction with fiber mesh forms a tough hard wearing substrate.

Where to use

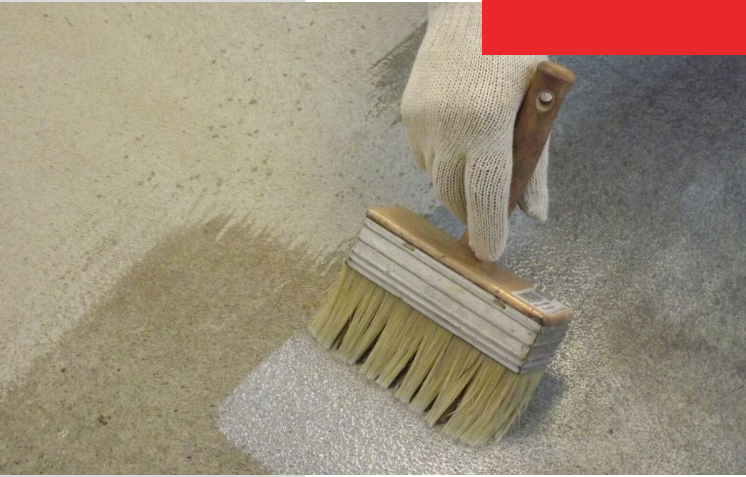
- Jembond ACP 16 is Used for surface treatment, protecting, waterproofing and repairing concrete and masonry.
- Waterproofing of basements, toilets, terraces, roofs, swimming pools, water towers, etc.



Technical Data

Mix Density GM/ CC:		1.01
Consumption:		Jembond ACP 16 ~ 0.05 to 0.1 kg/m ² depending on the porosity
Pot Life:		From +5°C to +35°C : 20 - 30 minutes
Packaging:		5 kg

JEMBOND ACP 01



Description

Jembond ACP 01 is an acrylic primer in water dispersion for consolidating porous surfaces and unsound screeds.

Where to use

- Anti-dust primer for cementitious surfaces.
- Primer for leveling and smoothing cement.
- Impregnation of cement based grouts with a powdery surface to reduce their porosity and absorbency (for indoor use).
- Consolidation of surfaces for cementitious renders, tuff and sandstone.

Technical Data

Dry Solids Content (%):	15
Brookfield Viscosity # 1, rpm 10 (mPa-s)	20
Waiting Time Before Bonding:	2 hours
Packaging:	Available in 5 kg and 10 kg

JEMFLOW 15

Description

Jemflow 15 is a blend of special rapid setting cements, graded aggregates, polymers and additives. It is supplied as a dry, grey powder which requires only the addition of water to produce a self smoothing, free flowing material.

Where to use

- Typical applications would include use in hospitals, restaurants, commercial spaces, institutions and shopping centers.
- Underlayment for vinyl sheet, carpet, tiles, wooden flooring, etc.
- Leveling concrete slabs and cementitious screeds.



Technical Data

Mix Density:	21-22 parts water per 100 parts by weight of Jemflow 15
Consumption:	Jemflow 15 ~ 1.6 kg/m ² / for 1 mm thickness
Pot Life:	From +5°C to +35°C : 20 - 30 Min.
Packaging:	25 kg

JEMSHIELD CT SMART



Description

Jemshield CT Smart is a two-component, modified, flexible cementitious High Performance Waterproof protective coating system in slurry form (with crack-bridging capacity > 2 mm) applied for waterproofing balconies, terraces, bathrooms and swimming pools.

Where to use

- Waterproofing treatment for large roofs, basement raft, against rising dampness, retaining structures, bathroom, balconies & terraces, podium, etc.
- Also use to protect concrete structures, hairline cracks, cementitious surfaces, etc.

Technical Data

Mix Ratio:	Component A : Component B = 2 : 1
Consumption:	Jemshield CT Smart ~ 1.6 kg/m ² / for 1 mm thickness
Pot Life:	From +5°C to +35°C : 20 - 30 minutes
Packaging:	30 kg (Component A: 20 kg; Component B: 10 kg)

JEMSHIELD CT SUPER

Description

Jemshield CT Super is a two-component, modified, normal setting Waterproof protective coating system in slurry form applied for waterproofing balconies, terraces, bathrooms, toilets, kitchens and swimming pools.

Where to use

- Waterproofing treatment for large roofs, basement raft, against rising dampness, retaining structures, bathroom, balconies & terraces, podium, toilets, kitchens etc.
- Also use to protect concrete structures, hairline cracks, cementitious surfaces, etc.



Technical Data

Mix Ratio:	Component A : Component B = 4 : 1
Consumption:	Jemshield CT Super ~ 1.1 kg/m ² / for 1 mm thickness
Pot Life:	From +5°C to +35°C : 20 - 30 Min.
Packaging:	25 kg (Component A: 20 kg; Component B: 5 kg)

JEMSHIELD CT FLEX



Description

Jemshield CT Flex is a two component much flexible cementitious High Performance Waterproof protective coating system in slurry form (with crack-bridging capacity > 2 mm) applied for waterproofing balconies, terraces, bathrooms and swimming pools.

Where to use

- Waterproofing treatment for large roofs, basement raft, against rising dampness, retaining structures, bathroom, balconies & terraces.
- Also used to protect concrete structures, hairline cracks, cementitious surfaces, etc.

Technical Data

Mix Ratio:	Component A : Component B = 1.6 : 1
Consumption:	Jemshield CT Flex ~ 0.75 kg/m ² / for 1 mm thickness
Pot Life:	From +5°C to +35°C : 20 - 30 minutes
Packaging:	26 kg (Component A: 16 kg; Component B: 10 kg)

JEMSHIELD CT 25

Description

Jemkon CT 25 is a osmotic cementitious mortar suitable for contact with drinking water, for waterproofing masonry and concrete structures.

Where to use

- Repairing underground masonries subject to water and moisture seepage in situations with negative pressure up to 1 atmosphere.
- Waterproofing basins, reservoirs, concrete or masonry tanks containing drinking water.
- Waterproofing concrete or masonry tanks containing sewage water.



Technical Data

Mix Ratio:	100 parts by weight of Jemshield CT 25 with 22% of water
Consumption:	approx. 1.5 kg/m ² per mm thickness
Pot Life:	approx. 1 h (at +20°C)
Packaging:	25 kg bags

JEMSIVE CT 20



Description

Jemsive CT 20 cement based adhesive for ceramic and vitrified tiles and blocks.

Where to use

- Internal and external bonding of ceramic and vitrified tiles.
- Tile on tile application, single-fired and double-fired tiles.
- Internal walls, floors and external floors.
- Preparation of interior and exterior masonry blocks and panels in expanded concrete, Calcium silicate and cellular blocks.

Technical Data

Mix Ratio:	100 parts Jemsive CT 20 with 23-25 parts by weight
Density of Mix (kg/m ³):	1600 (± 100)
Pot Life:	6 - 8 hours
Packaging:	Jemsive CT 20 is available in 40 Kg bags.

JEMSIVE CT 30

Description

Jemsive CT 30 is a high-performance cementitious adhesive with extended open time for ceramic vitrified tiles and stone material.

Where to use

- Bonding all types of ceramic tiles (porcelain, single-fired, terracotta, double-fired, klinker, etc.) vitrified tiles, natural stone and mosaic on internal walls and floors and external floors.
- Also suitable for spot bonding insulating materials such as foam polystyrene, foam polyurethane, rock wool, glass wool and soundproofing panels, etc.



Technical Data

Mix Ratio:	100 parts in weight of Jemsive CT 30 grey with 25-28 parts in weight of water 100 parts in weight of Jemsive CT 30 white with 28-30 parts in weight of water
Density of Mix (kg/m ³):	1300
Pot Life:	More than 8 hours
Packaging:	Jemsive CT 30 is available in white or grey in 25 kg bags.

JEMPROOF L 35

Description

Jemproof L 35 is a latex additive to impart elasticity to cementitious adhesives.

Where to use

- Ceramic tiles over underfloor heating installations.
- Ceramic tiles and stone material for exteriors (swimming pools, balconies, terraces).
- All types of ceramic tiles, including slim tiles on facades.
- Ceramic tiles on precast concrete walls (load-bearing panels, precast bathrooms, walls in "tunnel" systems, etc).

Technical Data

Mix Ratio:	Jemsive CT 30 + Jemproof L35 = 100 : 33 Jemsive CT 60 + Jemproof L35 diluted 1 = 100 : 36 (18 parts of water and 18 parts of Jemproof L 35)	
Density of Mix (kg/m ³):	1500 (± 100)	
Pot Life:	Over 8 hours	
Packaging:	Available in 8 kg bucket.	

JEMSIVE CT 40

Description

Jemsive CT 40 is a high-performance cementitious adhesive with no vertical slip and extended open time for ceramic, vitrified tiles and natural stone materials.

Where to use

- Interior and exterior bonding of ceramic tiles, vitrified tiles, stone and mosaic on floors, walls and ceilings.
- Suitable for spot bonding of insulating materials such as expanded polystyrene, rock and glass wool, Eraclit® (wood-cement panels), sound-deadening panels, etc.

Technical Data

Mix Density:	100 parts Jemsive CT 40 with 28-30 parts water by weight	
Density of Mix (kg/m ³):	1500 (± 100)	
Pot Life:	Over 8 hours	
Packaging:	Jemsive CT 40 is available in 25 kg bags.	



JEMSIVE CT 50

Description

Jemsive CT 50 is a high performance white cementitious adhesive, with no vertical slip and extended open time for glass, ceramic, vitrified mosaic tiles and natural stone.

Where to use

Interior and exterior floor and wall bonding of:

- Installation of normal or heavy weight mesh-backed or paper - faced glass, ceramic, vitrified and marble mosaic.
- Installation of ceramic, vitrified tiles and natural stone.

Technical Data

Mix Ratio:	33-36 parts water for 100 parts of Jemsive CT 50 or 18 parts water + 18 parts of Jemproof L 35 for 100 parts of Jemsive CT 50
Density of Mix (kg/m³):	1500 (± 100)
Pot Life:	Approx. 8 hours
Packaging:	Jemsive CT 50 is available in 25 kg paper bags.

JEMSIVE CT 60

Description

Jemsive CT 60 is a high performance, deformable cementitious adhesive with extended open time and no vertical slip, for ceramic and vitrified tiles and stone material, also suitable for the installation of large-size vitrified tiles and natural stone.

Where to use

- Interior and exterior wall and floor bonding of stone materials.
- Spot bonding of insulating material in interiors such as expanded polystyrene, rock and glass wool, Eraclit (wood-cement panels), sound-deadening panels, cork, etc.



Technical Data

Mix Ratio:	100 parts Jemsive CT 60 grey with 25-30 parts water by weight 100 parts Jemsive CT 60 white with 29-32 parts water by weight
Density of Mix (kg/m³):	1500 (± 100)
Pot Life:	Over 8 hours
Packaging:	Jemsive CT 60 is available in 25 kg paper bags.



JEMSIVE EP 100

Description

Jemsive EP 100 is a Two-component thixotropic epoxy adhesives for structural bonding.

Where to use

- Structural reinforcement of beams and pillars by bonding steel (beton plaque method) or composite material (e.g. Carboplate) plates to concrete.
- Non-flexible structural bonding of precast concrete elements.
- Sealing injectors and surface damage before injection of Jembond EPP 900 by low-pressure pump.
- Sealing large cracks and repairing joint corners in industrial flooring subject to traffic.

Technical Data

Mix Ratio:		Part A : Part B = 3 : 1
Compressive Strength (N/mm²):		80
Flexual Strength (N/mm²):		40
Packaging:		5 kg (Part A = 3.75 kg Part B = 1.25 kg)

JEMSTRETCH PLA 400



Description

JEMSTRETCH PLA 400 is a manually-applied two-component, polyurea waterproofing membrane.

Where to use

- Thanks to its excellent chemical resistance, high elasticity and high tear strength, Jemstretch PLA 400 is suitable for forming waterproofing membranes on small to medium size terraces and flat roof and for repairing surfaces waterproofed with hybrid polyurea or pure polyurea membranes.

Technical Data

Mix:		Two components, polyurea waterproofing membrane (Hand Applied).
Consumption:		2.6 kg/m ² per 2 mm thickness.
Pot Life:		at +23°C minimum 20
Packaging:		20 Kgs



JEMKOOL 666

Description

JEMKOOL 666 is one-component elastomeric, acrylic based flexible heat reflective and Roof Cooling along with Waterproofing properties.

Where to use

- Heat Proofing & Waterproofing of roofs (cement based as well as metal roof substrates).
- Heat Proof & Waterproofing coating for plastered walls.
- Weather Roofing over old refurbished roof.

Technical Data

Mix:		Single Component. Stir the material to remove any settling.
Consumption:		JEMKOOL 666 ~1.5 kg/ m ² @ 1mm thickness for 3 coats
Pot Life:		+25°C - Single Component
Packaging:		1,5 & 20 Kgs

JEMKOOL 555

Description

JEMKOOL 555 is one-component Polyurethane dispersion (PUD) hybrid based flexible heat reflective and Roof Cooling along with Waterproofing properties.

Where to use

- Heat Proofing & Waterproofing of roofs (cement based as well as metal roof substrates).
- Heat Proof & Waterproofing coating for plastered walls.
- Weather Roofing over old refurbished roof.



Technical Data

Mix:		Single Component. Stir the material to remove any settling.
Consumption:		JEMKOOL 555 ~25 - 35 sft per lt @ 150-200 microns thickness in 2 coats.
Pot Life:		+25°C - Single Component
Packaging:		1,5 & 20 Kgs

JEMPROOF SBR 36



Description

JEMPROOF SBR 36 synthetic rubber latex based multipurpose polymer for waterproofing and repairs.

Where to use

- High strength cement screeds for interior and exterior use.
- Cementitious bonding slurry for installing natural stone.
- High strength cement renders for interiors and exteriors.
- Cementitious bonding slurry to improve adhesion of conventional bonded screeds.
- Bonding slurry to improve adhesion of bonded screeds made from the same types of binder.

Technical Data

Adhesion to Substrate (+ 21°C - 50% U.R.) (MPa): - after 28 days	> 2.0
Compressive Strength (MPa): - after 1 day: - after 7 days: - after 28 days:	7 25 33
Packaging:	Jemproof SBR 36 is available in 0.250 kg X 24 nos. 0.500 kg X 12 nos. 1 kg X 12 nos.

JEMPROOF SRL 16



Description

JEMPROOF SRL 16 is a Greenish white, synthetic-rubber latex for mortar and cementitious adhesive.

Where to use

- Screeds and leveling compound with high-resistance for interior and exterior use.
- Cement renders for interior and exterior.
- Cement slurry with high adhesion for bonding new screed on existing screeds and concrete.
- Cement-mortar adhesive for exterior and interior bonding of ceramic.

Technical Data

Mix:	1 part by weight of Jemproof SRL 16, 4 parts of Powder
Open Time:	10 - 15 minutes
Bonding Strength: - after 7 days at 23°C - 50% R.H.: - after 28 days (7 days at 23°C - 50% R.H. and 21 days in water at 20°C) - after 21 days (7 days at 23°C - 50% R.H. and 14 days at 60°C)	2.5 N/mm ² (cohesive failure of substrate) 3.0 N/mm ² (cohesive failure of substrate) 2.5 N/mm ² (cohesive failure of substrate)
Compression Strength: after 1 day: after 3 days: after 7 days: after 28 days:	7 N/mm ² 14 N/mm ² 20 N/mm ² 30 N/mm ²
Flexural strength: after 1 day: after 3 days: after 7 days: after 28 days:	7 N/mm ² 14 N/mm ² 20 N/mm ² 30 N/mm ²
Packaging:	Jemproof SRL 16 is available in 25 kg and 200 kg drums.

JEMBOND EPP 900



Description

JEMBOND EPP 900 are epoxy adhesives made up of two pre components epoxy resin with a very viscosity for injection into micro-cracks, also on wet surfaces.

Where to use

- Monolithic sealing of cracks.
- Bonding steel plates to concrete by low pressure injection.
- Structural repair of beams, pillars and cracked floors by low pressure injection.
- Sealing of cracks in cementitious screeds.

Technical Data

Mix Ratio:	Component A : Component B = 4 : 1	
Compressive Strength (N/mm ²):	70	
Tensile Strength (N/mm ²):	40	
Packaging:	– 4 kg kits (Component A : 3.08 kg - Component B : 0.92 kg) – 2 kg kits (Component A : 1.54 kg - Component B : 0.46 kg)	

JEMBOND EPP 22

Description

JEMBOND EPP 22 are two component solvent-free epoxy adhesive for construction joints and for monolithic sealing of cracks in screeds.

Where to use

- Monolithic construction joints between fresh and hardened concrete.
- Bonding precast concrete elements.
- Bonding steel to concrete.
- Filling cracks in concrete.
- Rigid, waterproof construction joints (e.g. concrete bed, tank walls).



Technical Data

Mix Ratio:	Component A : Component B = 4 : 1	
Compressive Strength (N/mm ²):	70	
Tensile Strength (N/mm ²):	40	
Packaging:	10 kg kits (8 kg of Component A, 2 kg of component B). 2 kg kits (1.6 kg of Component A, 0.4 kg of Component B).	



JEMGROUT GP

Description
JEMGROUT GP is a general purpose non - shrinkable grout.

Where to use

- Grouting voids in structural elements.
- Patching up honeycombs in concrete.
- Filling gaps in precast elements.
- Grouting base plates and bridge bearings.

Technical Data

Density of Mix (kg/m³):	2200
Compressive Strength (MPa):	20 (after 1 day), 50 (after 7 days), 55 (after 28 days)
Flexural Strength (MPa):	4 (after 1 day), 7 (after 7 days), 8 (after 28 days)
Packaging:	5 kg & 25 kg bags

JEMBAND TAPE

Description
JEMBAND TAPE for flexible sealing and waterproofing expansion joints and cracks subject to movements up to 5 or 10 mm, using Jemband Tape 170 or Jemband Tape 325 respectively.

- Where to use**
- Flexible waterproofing seal of expansion joints subject to large amounts of movement in service.
 - Flexible waterproofing seals in tunnels, road-works, etc.
 - Sealing expansion joints in prefabricated panels.
 - Sealing structural joints.



Technical Data

Breaking Load (N/mm²):	> 4.5
Elongation at Break (%):	> 500
Packaging:	<p>Jemband Tape is supplied in boxes and is available in two sizes:</p> <p>-30 m x 17 cm rolls</p> <p>-30 m x 32.5 cm rolls</p>

JEMSHIELD TAPE



Description

JEMSHIELD TAPE is a double-sided adhesive tape for jointing, sealing and strengthening the waterproofing system.

Where to use

- Jemshield Tape is used for waterproofing joints, sealing and repairing waterproofing systems for underground structures.

Technical Data

Packaging:	Jemshield Tape is Available in 0.1 m x 20 m Rolls (4 Rolls in a Box).
------------	-----------------------------------------------------------------------

JEMSHIELD HDPE 1.5 W

Description

JEMSHIELD HDPE 1.5 W is a weldable pre-applied, fully bonded self-adhering, sanded HDPE waterproofing membrane to protect basements and underground structures.

Where to use

- Municipal construction, commercial and residential building basement waterproofing with ballasted method.
- Utility tunnel or culvert waterproofing project.
- Metro station and open-cut excavation structure.
- Special design for Damp substrate, but no water on the surface.



Technical Data

Tensile Strength:	≥ 29±5
Elongation at Break:	≥ 500% (-10% /+10%)
Joint Strength at Overlaps :	≥ 15±2 N/mm
Packaging:	Jemshield HDPE 1.5 W is available in 1.2 m or 2.4 m width X 20 m length and packed into plastic bag.

JEMSWELL 90

Description

JEMSWELL 90 is a hydrophilic expandable rubber section for watertight construction joints.

Where to use

- Jemswell 90 is use for creating water tight construction joints in civil, industrial and hydraulic construction.
- Waterproof joints between concrete beds and elevation walls.
- Contact joints between different types of materials, e.g. PVC or steel tubing going through poured concrete in swimming pools, sewage-treatment tanks, reservoirs and hydraulic projects in general.

Technical Data

Density (g/cm³):	1.5
Consumption:	approximately 300 ml per 5 linear metres
Elongation (%):	70-100
Packaging:	<ul style="list-style-type: none">• 10 (20x10 mm): six 10 m rolls.• 15 (20x15 mm): six 7 m rolls.• 25 (20x25 mm): six 5 m rolls.

JEMTEX PPF 01



Description

JEMTEX PPF 01 is a non-woven polypropylene fabric for reinforcing waterproofing membranes.

Where to use

- Reinforcement in polypropylene fabric used together with Jemshield CT Smart, flexible cementitious membranes for waterproofing and protecting concrete surfaces and concrete units particularly subject to large deformations and, therefore, at risk of cracking.

Technical Data

Tensile Strength (kN/m):	5.8 (Longitudinal Direction) 7.2 (Transversal Direction)
Deformation at Maximum Strain (%):	90 (Longitudinal Direction) 60 (Transversal Direction)
Packaging:	Jemtex PPF 01 is available in 25 m long rolls with a width of 1 m.

JEMSHIELD RSP

Description

JEMSHIELD RSP is a hydro-expansive, rubber-based hydrophilic sealant paste in tubes, applied using an extrusion gun.

Where to use

- Sealing pipe-work which passes through concrete.
- Sealing cold joints in reinforced concrete structures.
- Sealing where water seeps through cracks in reinforced concrete structures.
- Sealing lights and drainage outlets in swimming pools and tanks.
- Sealing construction joints in concrete walls.



Technical Data

Brookfield Viscosity at +23° C (mPa·s):	700,000 (rotor F - 5 RPM)
Elongation (Din 53504):	> 700 %
Tear Strength ISO 34-1 :	10 N/mm
Packaging:	Boxes containing 6 cartridges, each one containing 320 ml.

CLIENT LIST



TOYOTA



HONDA
The Power of Dreams



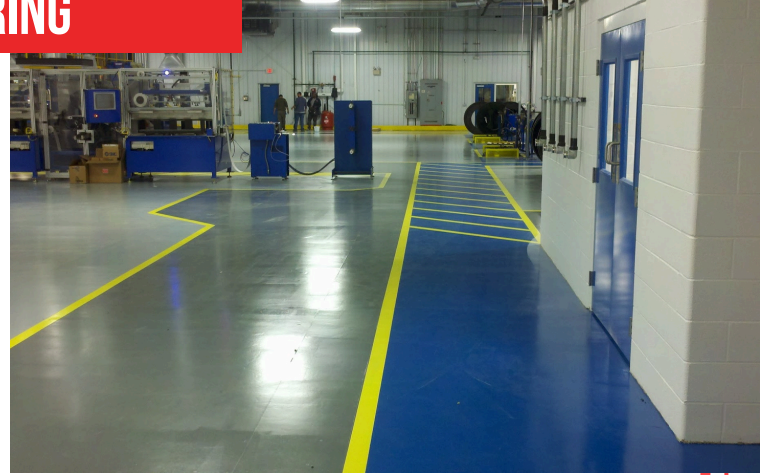
ADITYA BIRLA GROUP



JEMKON'S OTHER DEVISION

INDUSTRIAL & COMMERCIAL FLOORING

- Epoxy / PU / EPU Flooring
- Chemical Resistant Flooring
- Concrete Repair Material
- Dust Proof Sealers
- Car Park Flooring
- Concrete Densifiers
- Wall Coating & Coving
- Anti Corrosive & Coating
- ESD / Constructive & Antistatic Flooring
- UV Resistant Coatings



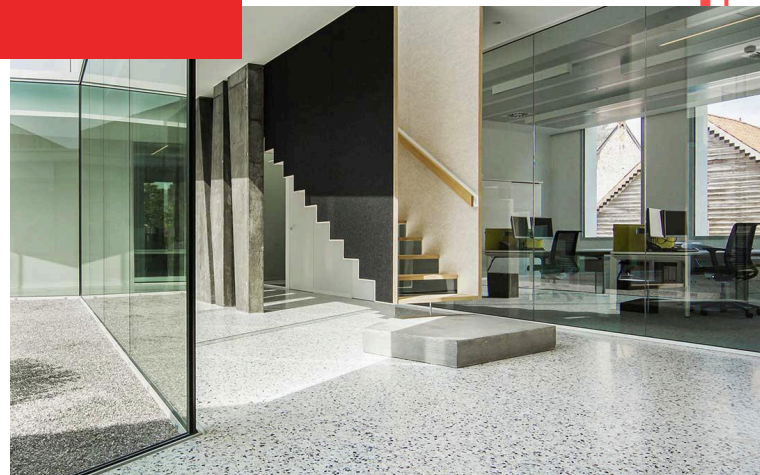
SPORTS FLOORING

- PU Flooring



DECORATIVE FLOORING

- Terazzo Flooring



CORPORATE OFFICE

Plot No.1, Survey No.795/2, Talawade Road, opp.
Mahindra Gate No.2, Subhash wadi, Nighoje -
Talwade Road, Nighoje, Chakan, Pune,
Maharashtra - 410501, India
Contact No - +91 7397863410 / +91 8956740753
E-mail: enquiry@jemkon.com

MANUFACTURING UNIT

Gat No. 84, Dhanore Phata, Alandi - Markal Road
Behind Bharat Gas Godown, Tal. Khed, Alandi,
Pune, Maharashtra - 412105
Contact No - +91 7397863410 / +91 8956740753
E-mail: enquiry@jemkon.com

BRANCH OFFICE

Contact No - +91 7397863410 / +91 9172113600

DELHI

BANGALORE

CHENNAI

KOLKATA

AHMEDABAD

BADDI

HYDERABAD



+91 8956740753



www.jemkon.com

